



Note: The image above is a panorama photograph taken from 4263 Salt Works Rd. in the Town of Shelby panning clockwise from north (left) to southwest (right). The green rectangle represents the extent of the simulated photograph.

VIEWPOINT 1
4263 Salt Works Rd.

VIEWPOINT INFORMATION

Location: 4263 Salt Works Rd.
Town: Shelby
County: Orleans
Latitude: 43.20336° N
Longitude: 78.41653° W
Viewer Distance*: 0.8 mile

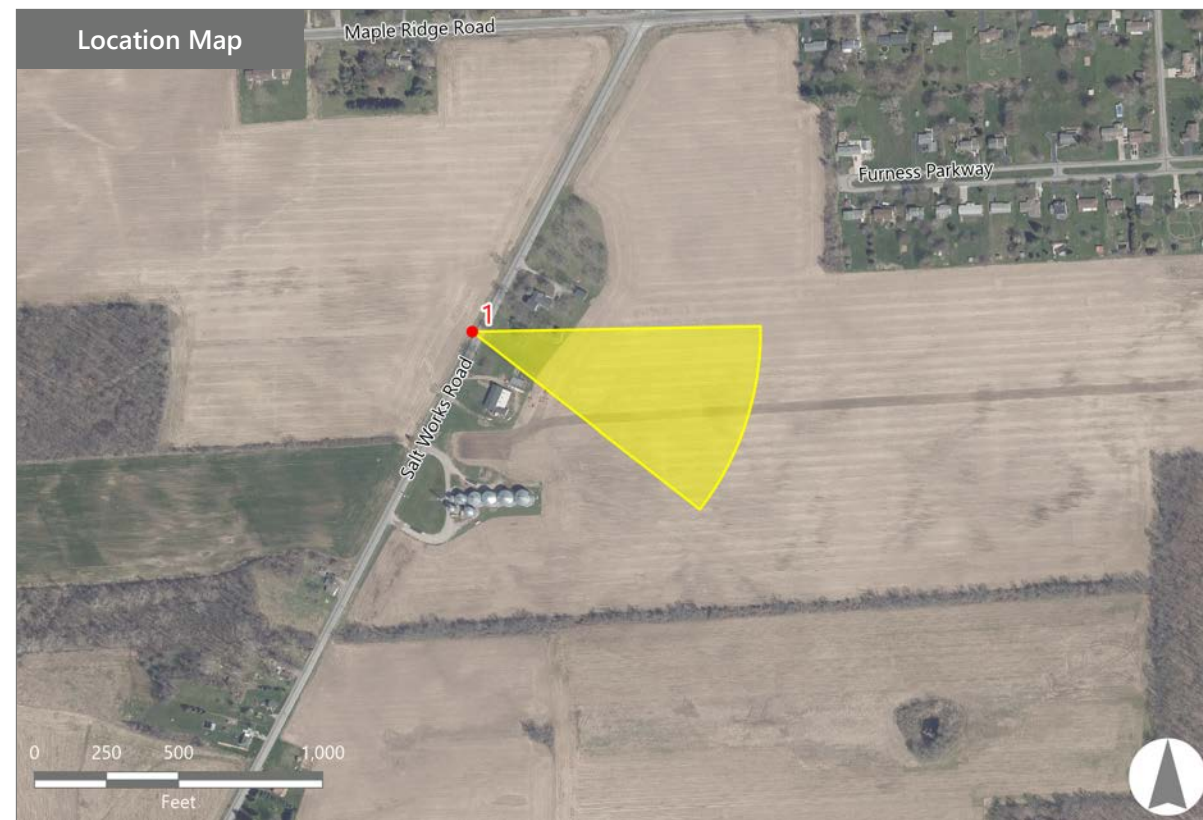
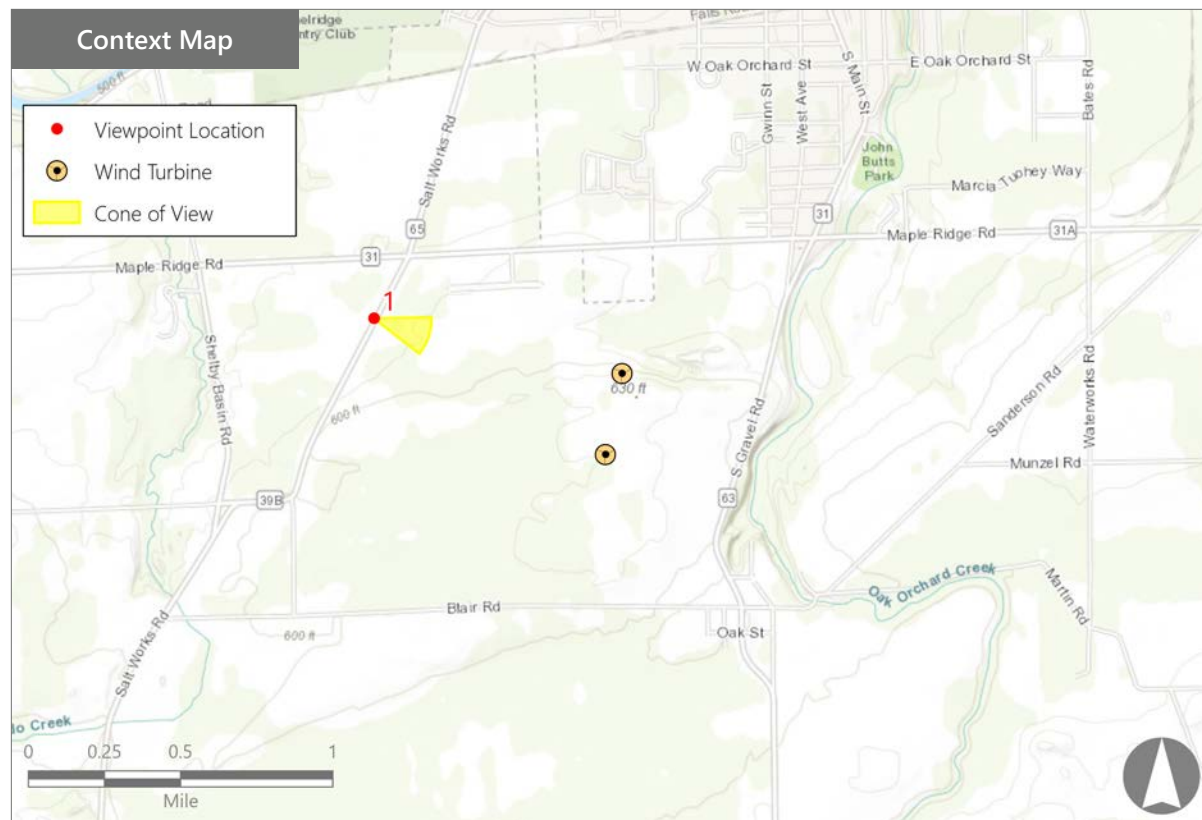
PHOTOGRAPH INFORMATION

Date: May 24, 2022
Time: 1:03 PM
Camera: Nikon D7100
Resolution: 24 Megapixels
Lens Focal Length (35mm equivalent): 51 mm
Camera Elevation: 575 feet
Field of View: 39 degrees
Direction of View: Southeast
Printed Size: 10" x 15"
Viewing Distance:** 22"

NOTES

*Distance as measured from the viewpoint to the closest wind turbine generator within the simulated photograph's field of view

**The simulation is at the correct perspective when printed on an 11 inch by 17 inch sheet at full scale, and viewed approximately 22 inches from the eye of the viewer.



South Gravel Road Wind

Town of Shelby, Orleans County, New York

EXISTING



Note: Printed at actual size, the resulting simulation image is 15 inches wide by 10 inches high. At this size and focal length, the simulation should be viewed from a distance 22 inches from the eye of the viewer.

PHOTOSIMULATION



Note: Printed at actual size, the resulting simulation image is 15 inches wide by 10 inches high. At this size and focal length, the simulation should be viewed from a distance 22 inches from the eye of the viewer.



Note: The image above is a panorama photograph taken from 4536 S. Gravel Rd. in the Town of Shelby panning clockwise from south (left) to north (right). The green rectangle represents the extent of the simulated photograph.

VIEWPOINT 2
4536 S. Gravel Rd.

VIEWPOINT INFORMATION

Location: 4536 S. Gravel Rd.
Town: Shelby
County: Orleans
Latitude: 43.19266° N
Longitude: 78.39424° W
Viewer Distance*: 0.4 mile

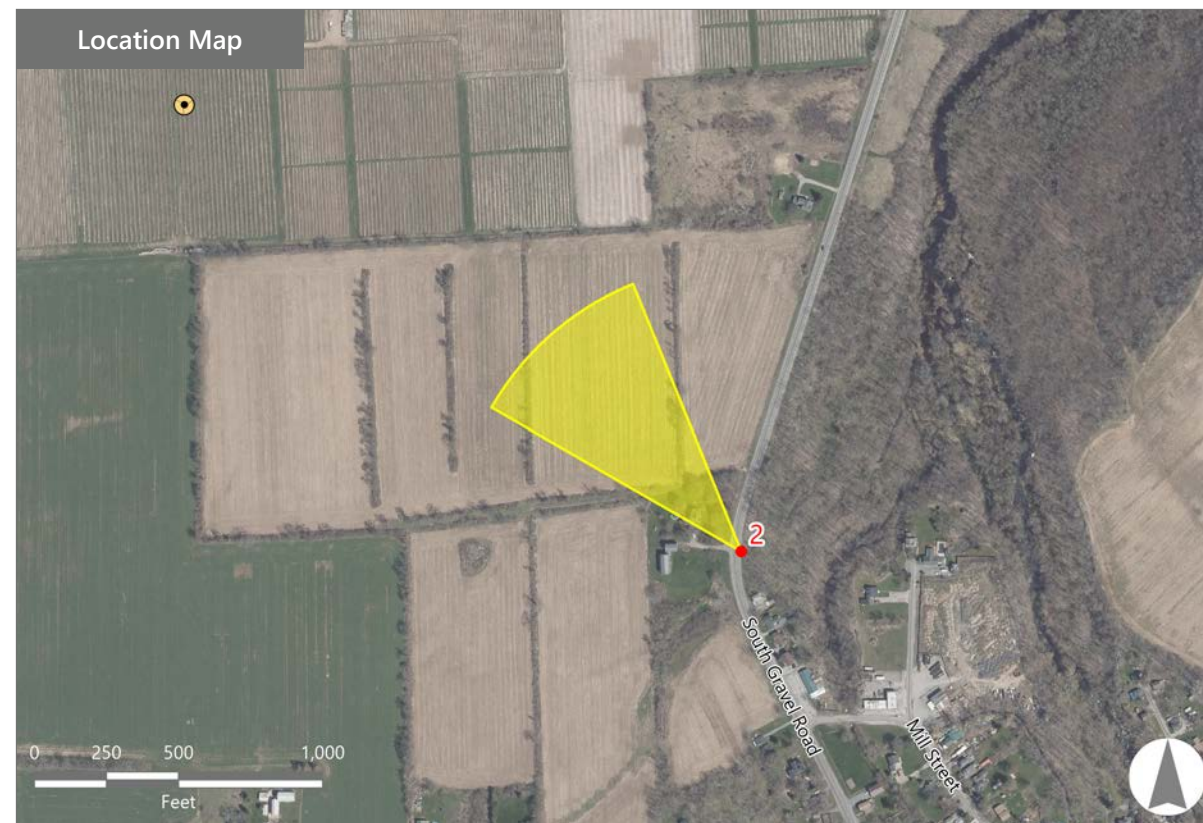
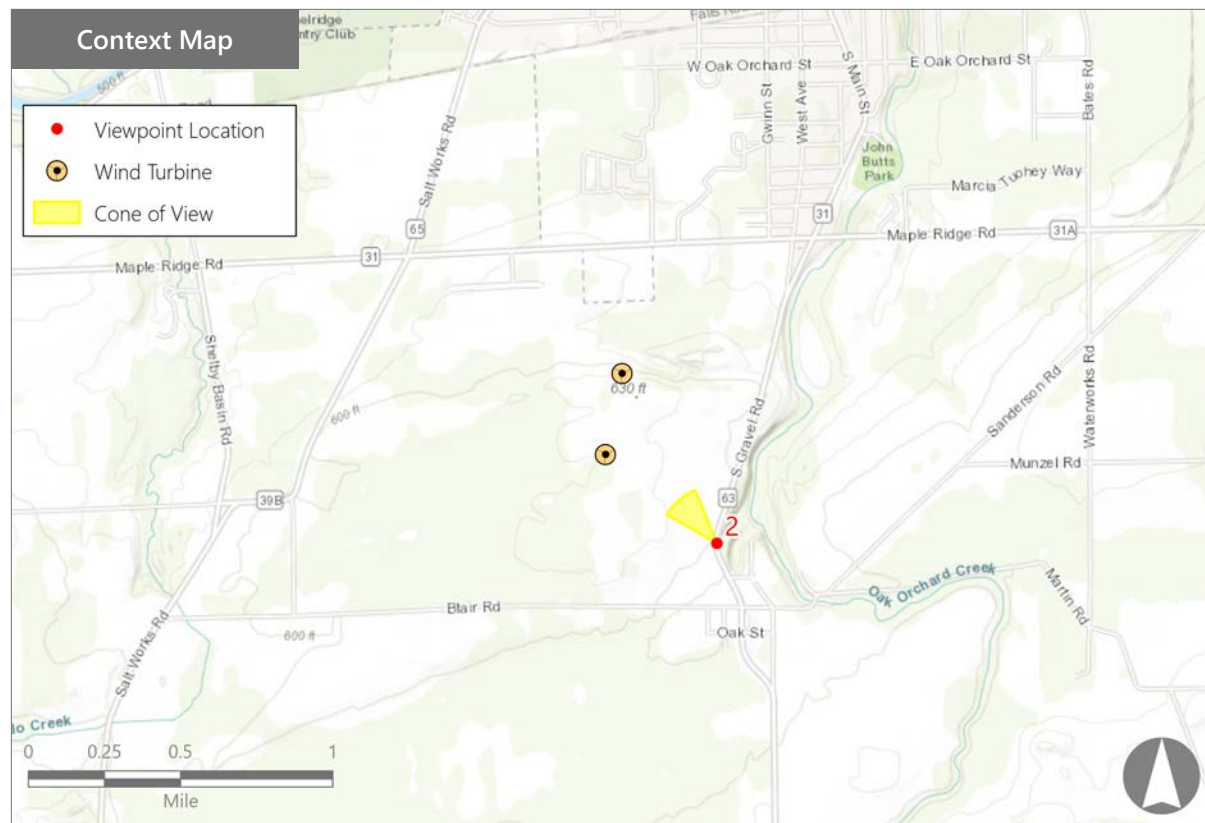
PHOTOGRAPH INFORMATION

Date: May 24, 2022
Time: 10:34 AM
Camera: Nikon D7100
Resolution: 24 Megapixels
Lens Focal Length (35mm equivalent): 51 mm
Camera Elevation: 605 feet
Field of View: 38 degrees
Direction of View: Northwest
Printed Size: 10" x 15"
Viewing Distance:** 22"

NOTES

*Distance as measured from the viewpoint to the closest wind turbine generator within the simulated photograph's field of view

**The simulation is at the correct perspective when printed on an 11 inch by 17 inch sheet at full scale, and viewed approximately 22 inches from the eye of the viewer.



South Gravel Road Wind

Town of Shelby, Orleans County, New York

EXISTING



Note: Printed at actual size, the resulting simulation image is 15 inches wide by 10 inches high. At this size and focal length, the simulation should be viewed from a distance 22 inches from the eye of the viewer.

WIREFRAME SIMULATION



0 1 in 2 in
This scale is designed to insure the simulation images are printed at the intended size.

VIEWPOINT 2
4536 S. Gravel Rd.

South Gravel Road Wind
Town of Shelby, Orleans County, New York
EDR

Note: Printed at actual size, the resulting simulation image is 15 inches wide by 10 inches high. At this size and focal length, the simulation should be viewed from a distance 22 inches from the eye of the viewer.



Note: The image above is a panorama photograph taken from 4596 S. Gravel Rd. in the Town of Shelby panning clockwise from southeast (left) to north (right). The green rectangle represents the extent of the simulated photograph.

VIEWPOINT 3
4596 S. Gravel Rd.

VIEWPOINT INFORMATION

Location: 4596 S. Gravel Rd.
Town: Shelby
County: Orleans
Latitude: 43.19052° N
Longitude: 78.39304° W
Viewer Distance*: 0.6 mile

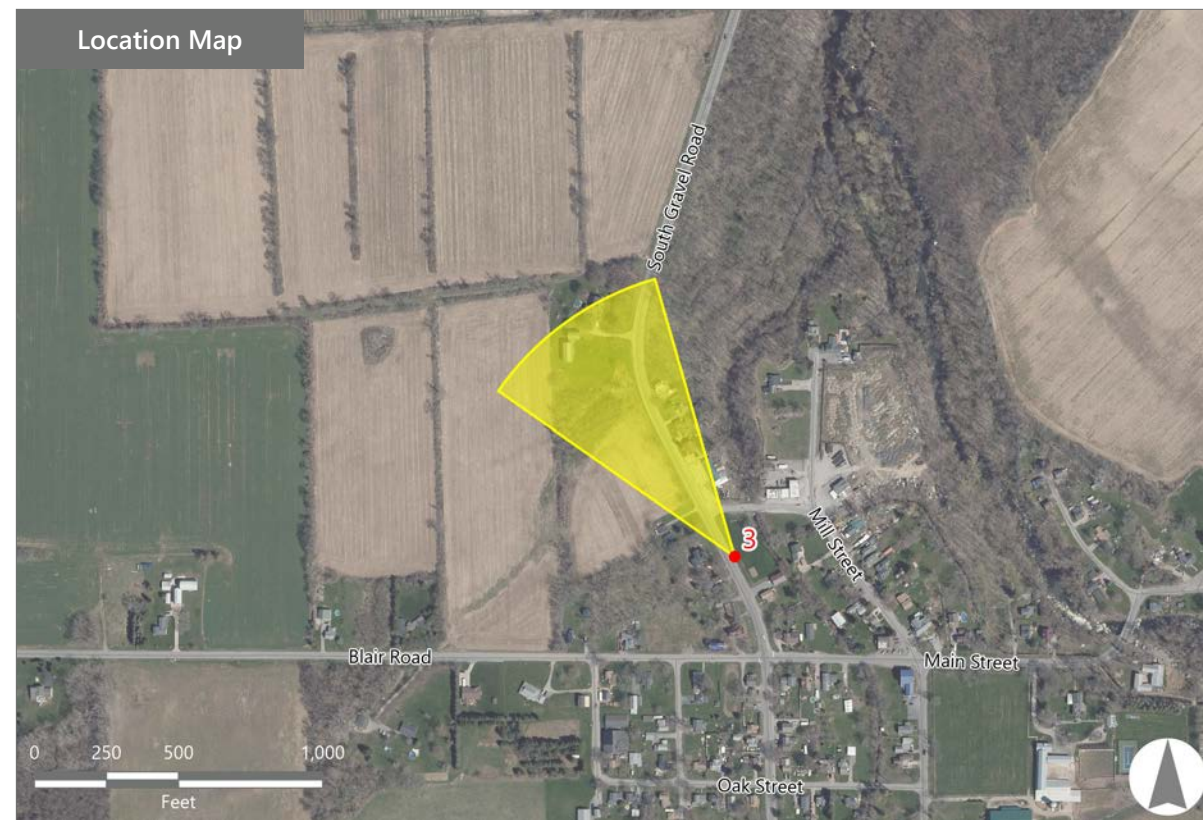
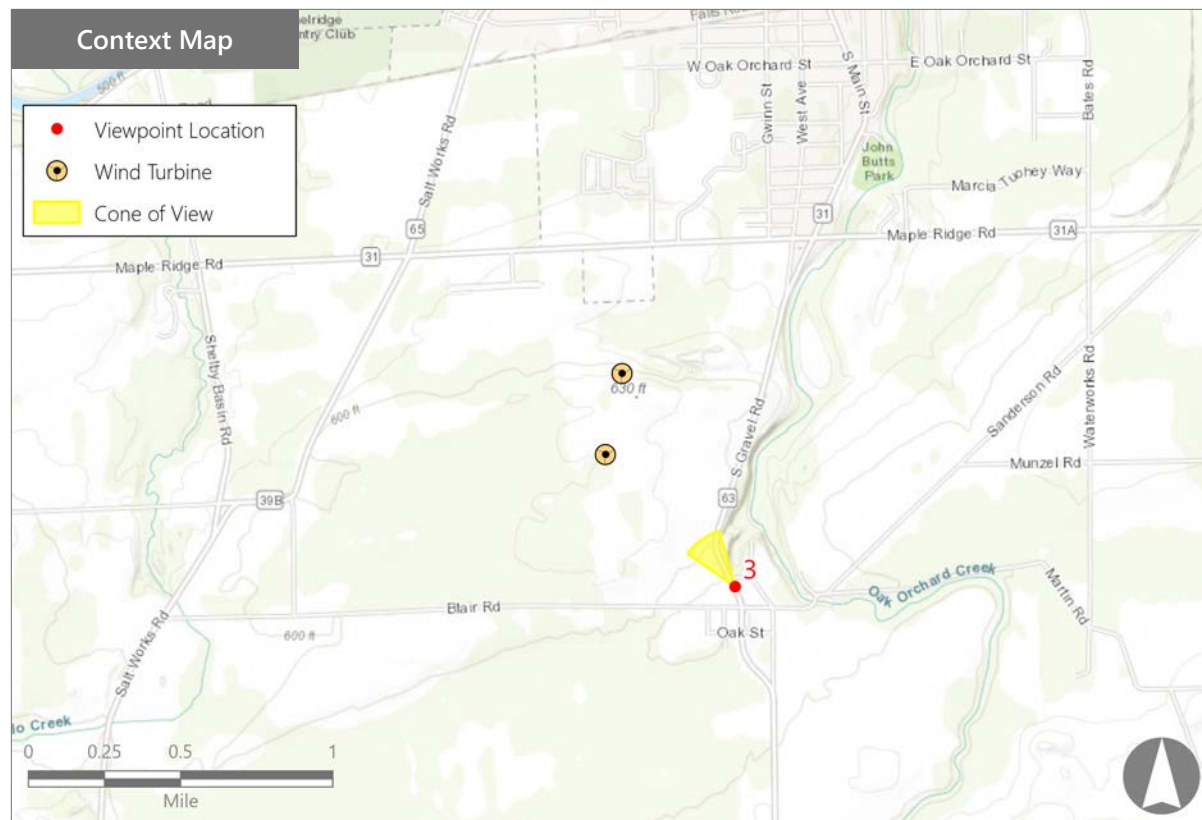
PHOTOGRAPH INFORMATION

Date: May 24, 2022
Time: 10:39 AM
Camera: Nikon D7100
Resolution: 24 Megapixels
Lens Focal Length (35mm equivalent): 51 mm
Camera Elevation: 604 feet
Field of View: 39 degrees
Direction of View: Northwest
Printed Size: 10" x 15"
Viewing Distance:** 22"

NOTES

*Distance as measured from the viewpoint to the closest wind turbine generator within the simulated photograph's field of view

**The simulation is at the correct perspective when printed on an 11 inch by 17 inch sheet at full scale, and viewed approximately 22 inches from the eye of the viewer.



South Gravel Road Wind

Town of Shelby, Orleans County, New York

EXISTING



0 1 in 2 in
This scale is designed to insure the simulation images are printed at the intended size.

VIEWPOINT 3
4596 S. Gravel Rd.

South Gravel Road Wind
Town of Shelby, Orleans County, New York
EDR

Note: Printed at actual size, the resulting simulation image is 15 inches wide by 10 inches high. At this size and focal length, the simulation should be viewed from a distance 22 inches from the eye of the viewer.

PHOTOSIMULATION



0 1 in 2 in
This scale is designed to insure the simulation images are printed at the intended size.

VIEWPOINT 3
4596 S. Gravel Rd.

South Gravel Road Wind
Town of Shelby, Orleans County, New York
EDR

Note: Printed at actual size, the resulting simulation image is 15 inches wide by 10 inches high. At this size and focal length, the simulation should be viewed from a distance 22 inches from the eye of the viewer.



Note: The image above is a panorama photograph taken from 4613 S. Gravel Rd. in the Town of Shelby panning clockwise from south (left) to northeast (right). The green rectangle represents the extent of the simulated photograph.

VIEWPOINT 4
4613 S. Gravel Rd.

VIEWPOINT INFORMATION

Location: 4613 S. Gravel Rd.
Town: Shelby
County: Orleans
Latitude: 43.18953° N
Longitude: 78.39260° W
Viewer Distance*: 0.7 mile

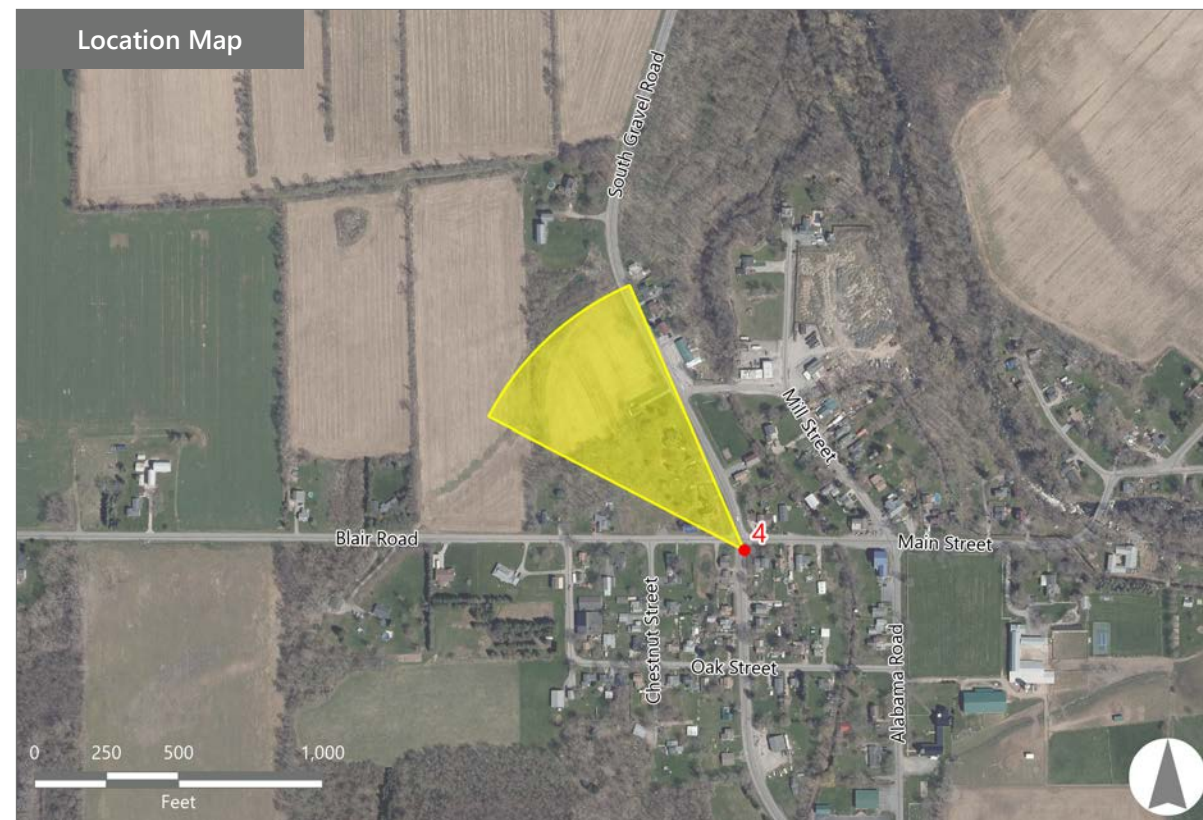
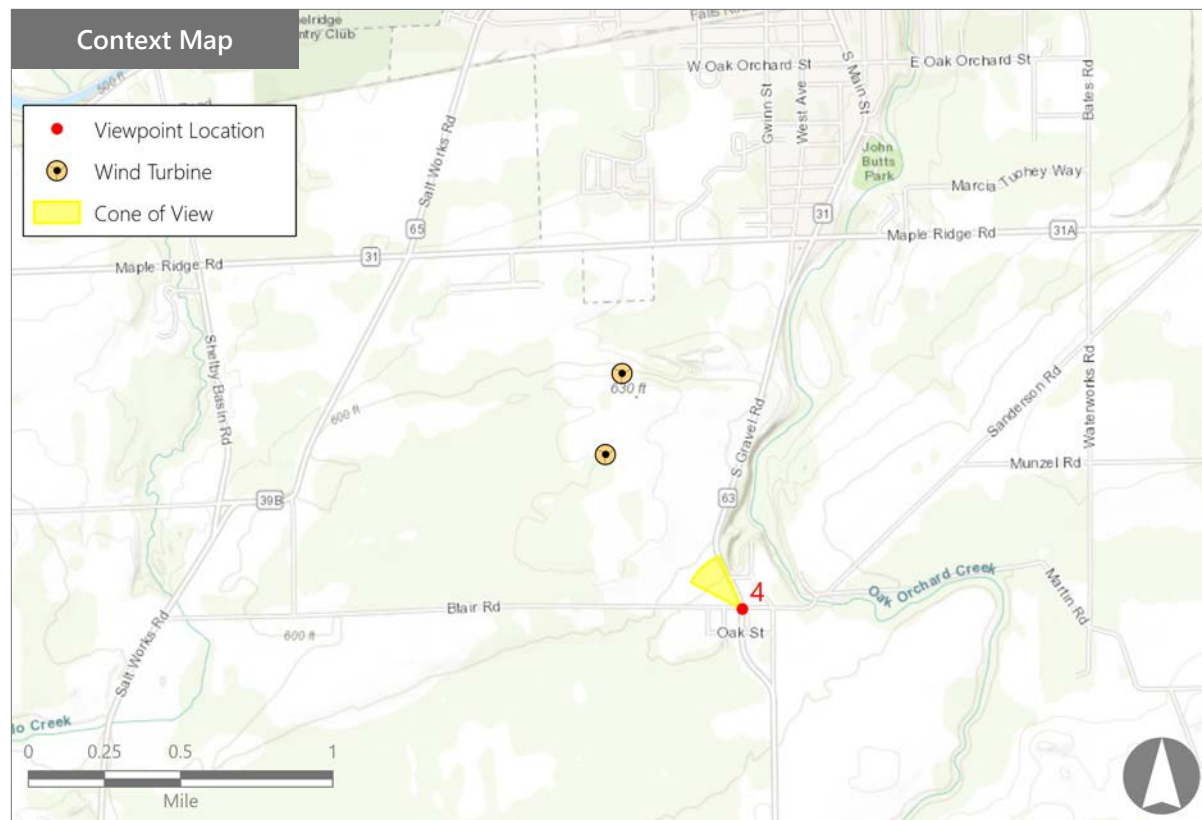
PHOTOGRAPH INFORMATION

Date: May 24, 2022
Time: 10:18 AM
Camera: Nikon D7100
Resolution: 24 Megapixels
Lens Focal Length (35mm equivalent): 51 mm
Camera Elevation: 606 feet
Field of View: 39 degrees
Direction of View: Northwest
Printed Size: 10" x 15"
Viewing Distance:** 22"

NOTES

*Distance as measured from the viewpoint to the closest wind turbine generator within the simulated photograph's field of view

**The simulation is at the correct perspective when printed on an 11 inch by 17 inch sheet at full scale, and viewed approximately 22 inches from the eye of the viewer.



South Gravel Road Wind

Town of Shelby, Orleans County, New York

EXISTING



0 1 in 2 in
This scale is designed to insure the simulation images are printed at the intended size.

VIEWPOINT 4
4613 S. Gravel Rd.

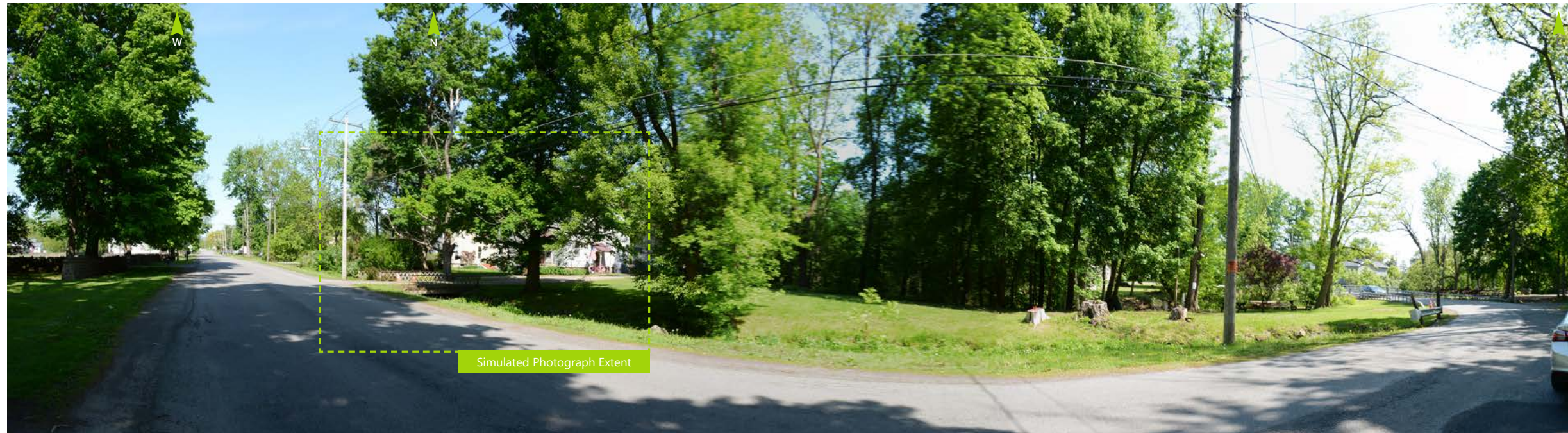
South Gravel Road Wind
Town of Shelby, Orleans County, New York
EDR

Note: Printed at actual size, the resulting simulation image is 15 inches wide by 10 inches high. At this size and focal length, the simulation should be viewed from a distance 22 inches from the eye of the viewer.

WIREFRAME SIMULATION



Note: Printed at actual size, the resulting simulation image is 15 inches wide by 10 inches high. At this size and focal length, the simulation should be viewed from a distance 22 inches from the eye of the viewer.



Note: The image above is a panorama photograph taken from 11380 Main St. in the Town of Shelby panning clockwise from west (left) to east (right). The green rectangle represents the extent of the simulated photograph.

VIEWPOINT 5
11380 Main St.

VIEWPOINT INFORMATION

Location: 11380 Main St.
Town: Shelby
County: Orleans
Latitude: 43.18955° N
Longitude: 78.38864° W
Viewer Distance*: 0.8 mile

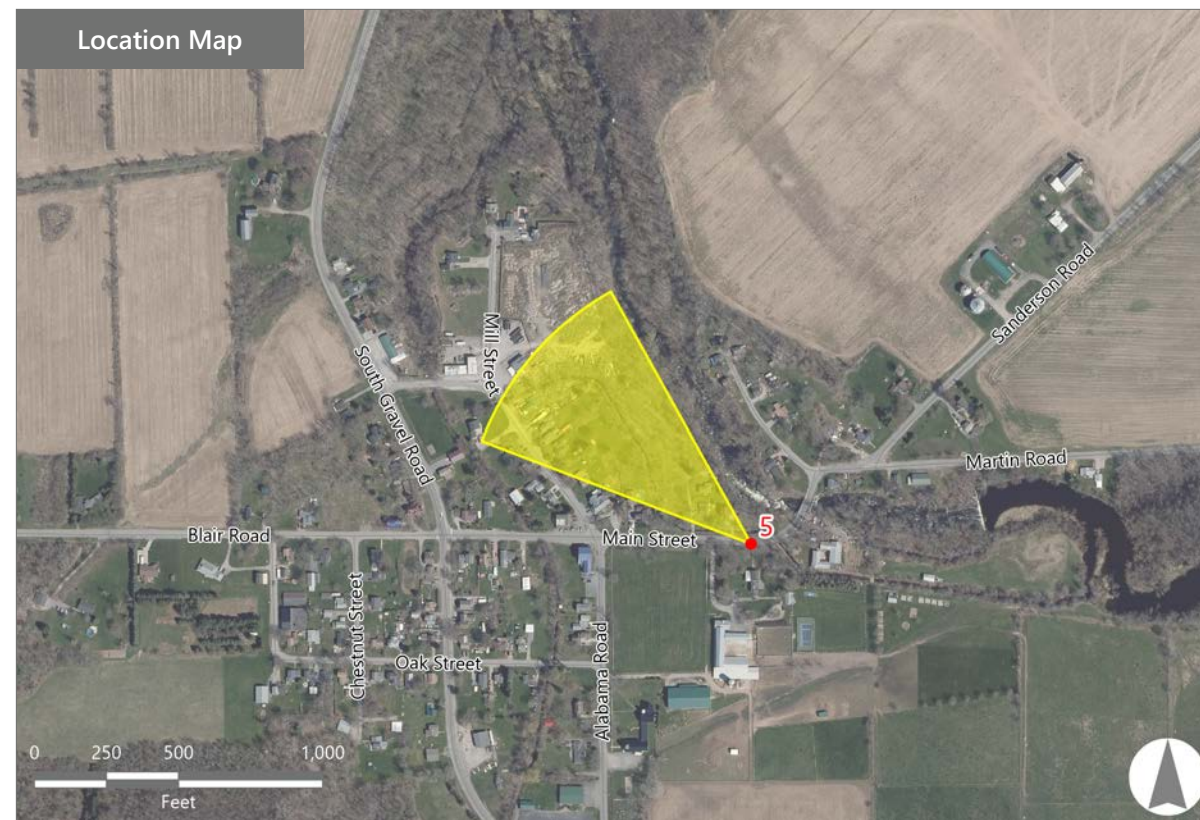
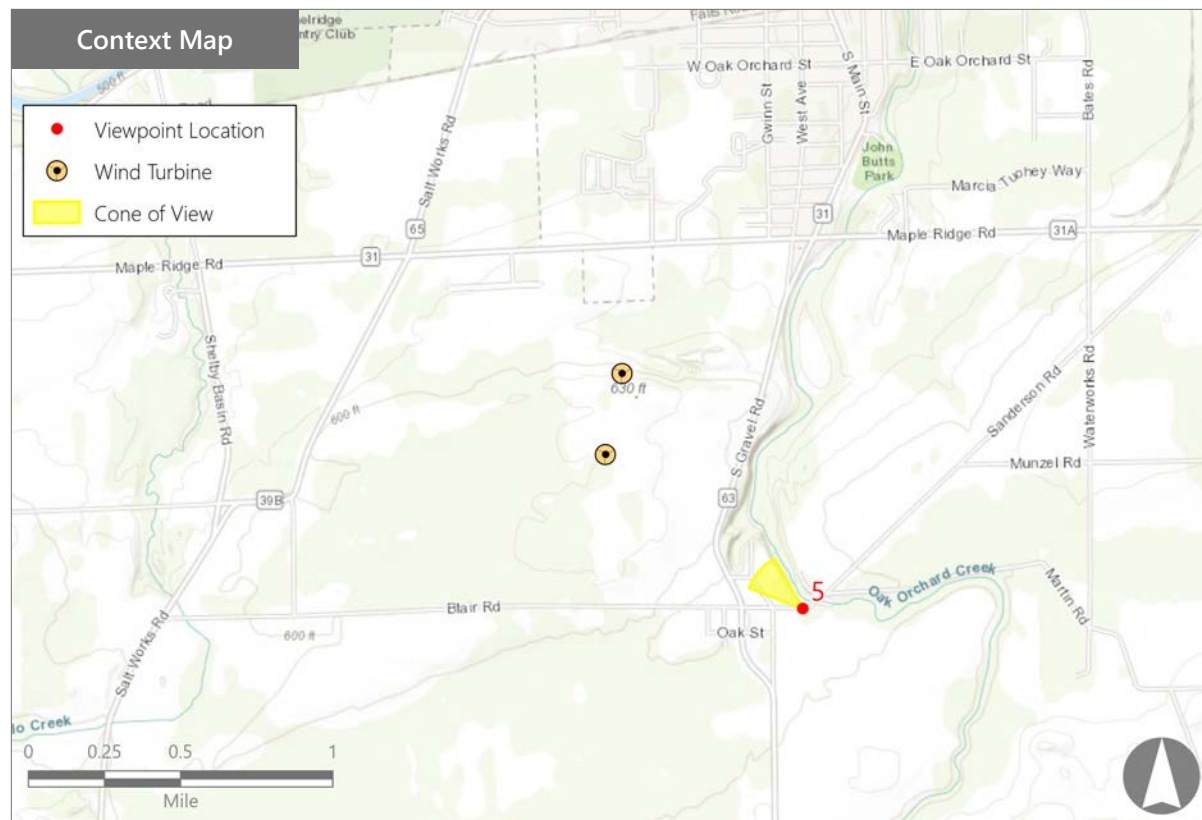
PHOTOGRAPH INFORMATION

Date: May 24, 2022
Time: 10:21 AM
Camera: Nikon D7100
Resolution: 24 Megapixels
Lens Focal Length (35mm equivalent): 48 mm
Camera Elevation: 604 feet
Field of View: 40 degrees
Direction of View: Northwest
Printed Size: 10" x 15"
Viewing Distance:** 20"

NOTES

*Distance as measured from the viewpoint to the closest wind turbine generator within the simulated photograph's field of view

**The simulation is at the correct perspective when printed on an 11 inch by 17 inch sheet at full scale, and viewed approximately 20 inches from the eye of the viewer.



South Gravel Road Wind

Town of Shelby, Orleans County, New York

EXISTING



VIEWPOINT 5
11380 Main St.

South Gravel Road Wind
Town of Shelby, Orleans County, New York



0 1 in 2 in
This scale is designed to insure the simulation images are printed at the intended size.

Note: Printed at actual size, the resulting simulation image is 15 inches wide by 10 inches high. At this size and focal length, the simulation should be viewed from a distance 20 inches from the eye of the viewer.

WIREFRAME SIMULATION



0 1 in 2 in
This scale is designed to insure the simulation images are printed at the intended size.

VIEWPOINT 5
11380 Main St.

South Gravel Road Wind
Town of Shelby, Orleans County, New York



Note: Printed at actual size, the resulting simulation image is 15 inches wide by 10 inches high. At this size and focal length, the simulation should be viewed from a distance 20 inches from the eye of the viewer.



Note: The image above is a panorama photograph taken from Medina Main St Historic District in the Village of Medina panning clockwise from east (left) to northwest (right). The green rectangle represents the extent of the simulated photograph.

VIEWPOINT 6
Medina Main St Historic District

VIEWPOINT INFORMATION

Location: Medina Main St Historic District
Village: Medina
County: Orleans
Latitude: 43.22048° N
Longitude: 78.38683° W
Viewer Distance*: 1.5 miles

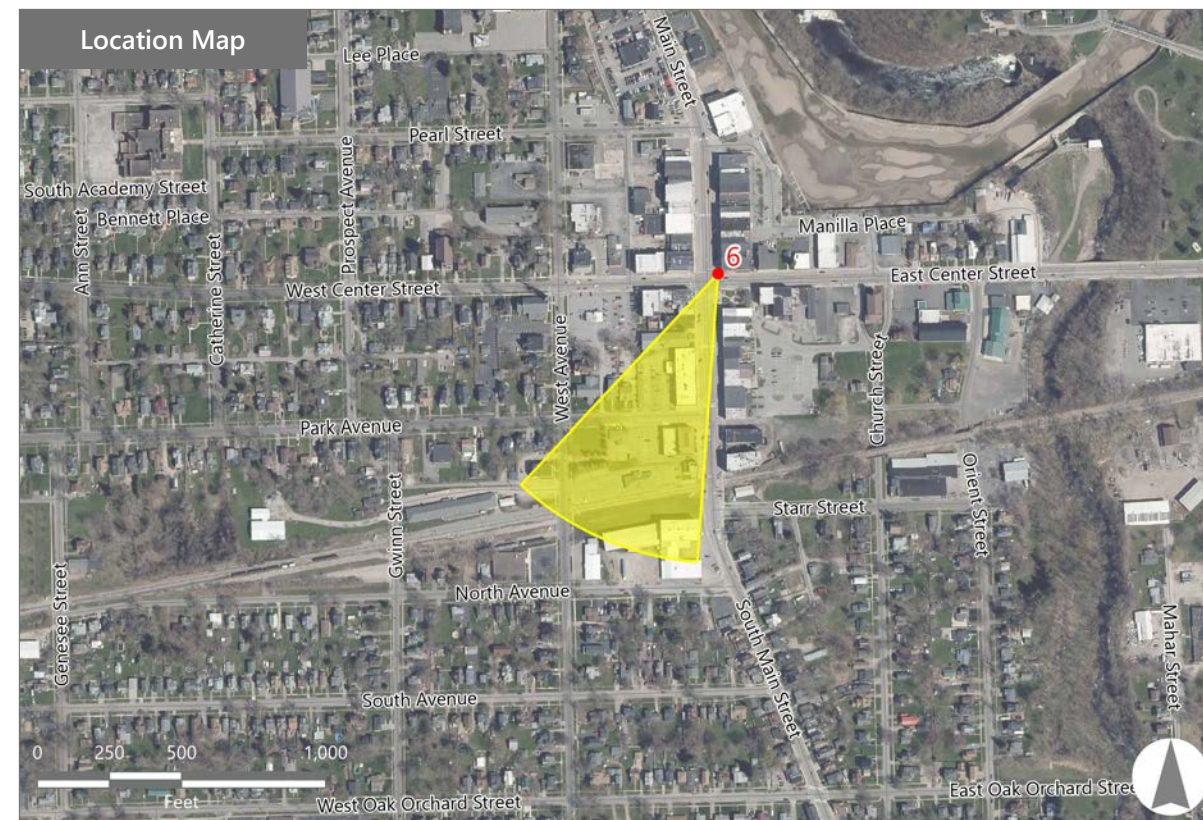
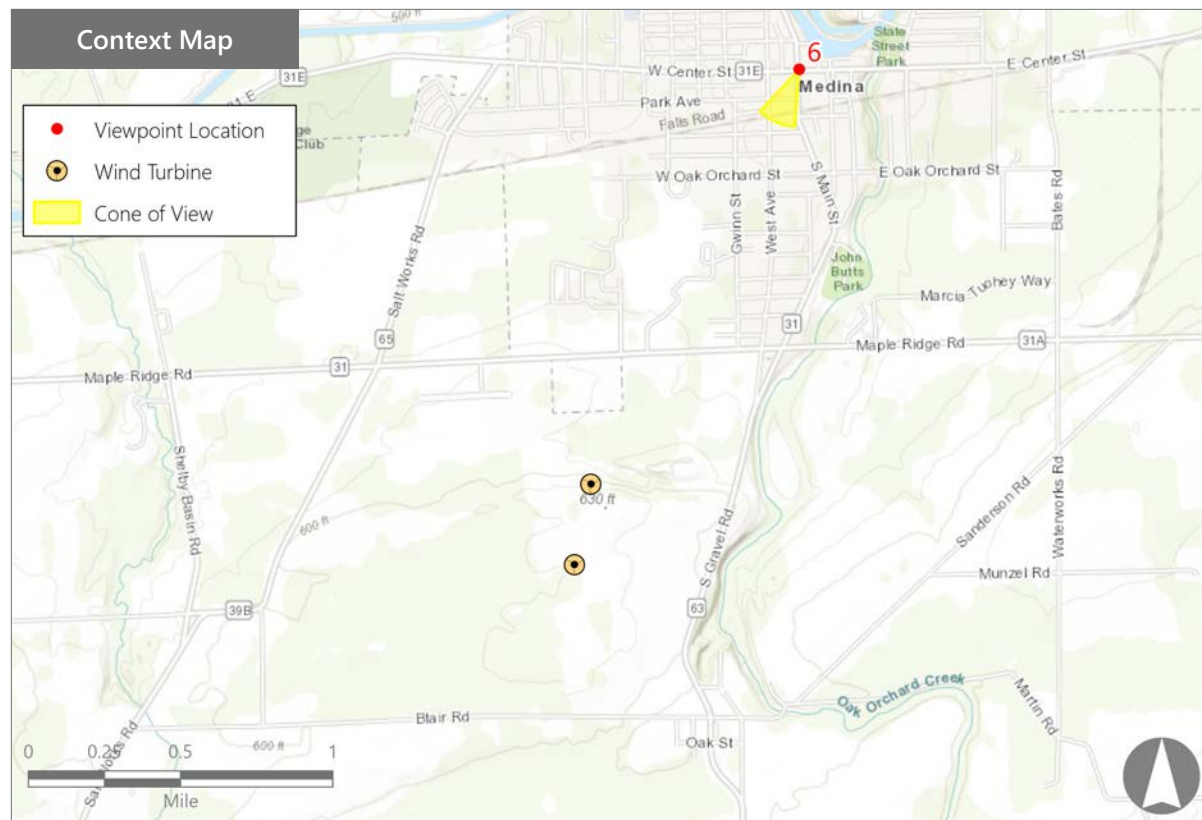
PHOTOGRAPH INFORMATION

Date: May 24, 2022
Time: 11:29 AM
Camera: Nikon D7100
Resolution: 24 Megapixels
Lens Focal Length (35mm equivalent): 51 mm
Camera Elevation: 583 feet
Field of View: 39 degrees
Direction of View: Southwest
Printed Size: 10" x 15"
Viewing Distance:** 22"

NOTES

*Distance as measured from the viewpoint to the closest wind turbine generator within the simulated photograph's field of view

**The simulation is at the correct perspective when printed on an 11 inch by 17 inch sheet at full scale, and viewed approximately 22 inches from the eye of the viewer.



South Gravel Road Wind

Town of Shelby, Orleans County, New York

EXISTING



0 1 in 2 in
 This scale is designed to insure the simulation images are printed at the intended size.

VIEWPOINT 6
 Medina Main St Historic District

South Gravel Road Wind
 Town of Shelby, Orleans County, New York
 EDR

Note: Printed at actual size, the resulting simulation image is 15 inches wide by 10 inches high. At this size and focal length, the simulation should be viewed from a distance 22 inches from the eye of the viewer.

WIREFRAME SIMULATION



0 1 in 2 in
This scale is designed to insure the simulation images are printed at the intended size.

VIEWPOINT 6
Medina Main St Historic District

South Gravel Road Wind
Town of Shelby, Orleans County, New York



Note: Printed at actual size, the resulting simulation image is 15 inches wide by 10 inches high. At this size and focal length, the simulation should be viewed from a distance 22 inches from the eye of the viewer.



Note: The image above is an a panorama photograph taken from Erie Canal Heritage Trail in the Village of Medina panning clockwise from southeast (left) to northwest (right). The green rectangle represents the extent of the simulated photograph.

VIEWPOINT 7
Erie Canal Heritage Trail

VIEWPOINT INFORMATION

Location: Erie Canal Heritage Trail
Village: Medina
County: Orleans
Latitude: 43.22407° N
Longitude: 78.38742° W
Viewer Distance*: 1.7 miles

PHOTOGRAPH INFORMATION

Date: June 3, 2022

Time: 7:46 AM

Camera: Nikon D7100

Resolution: 24 Megapixels

Lens Focal Length (35mm equivalent): 51 mm

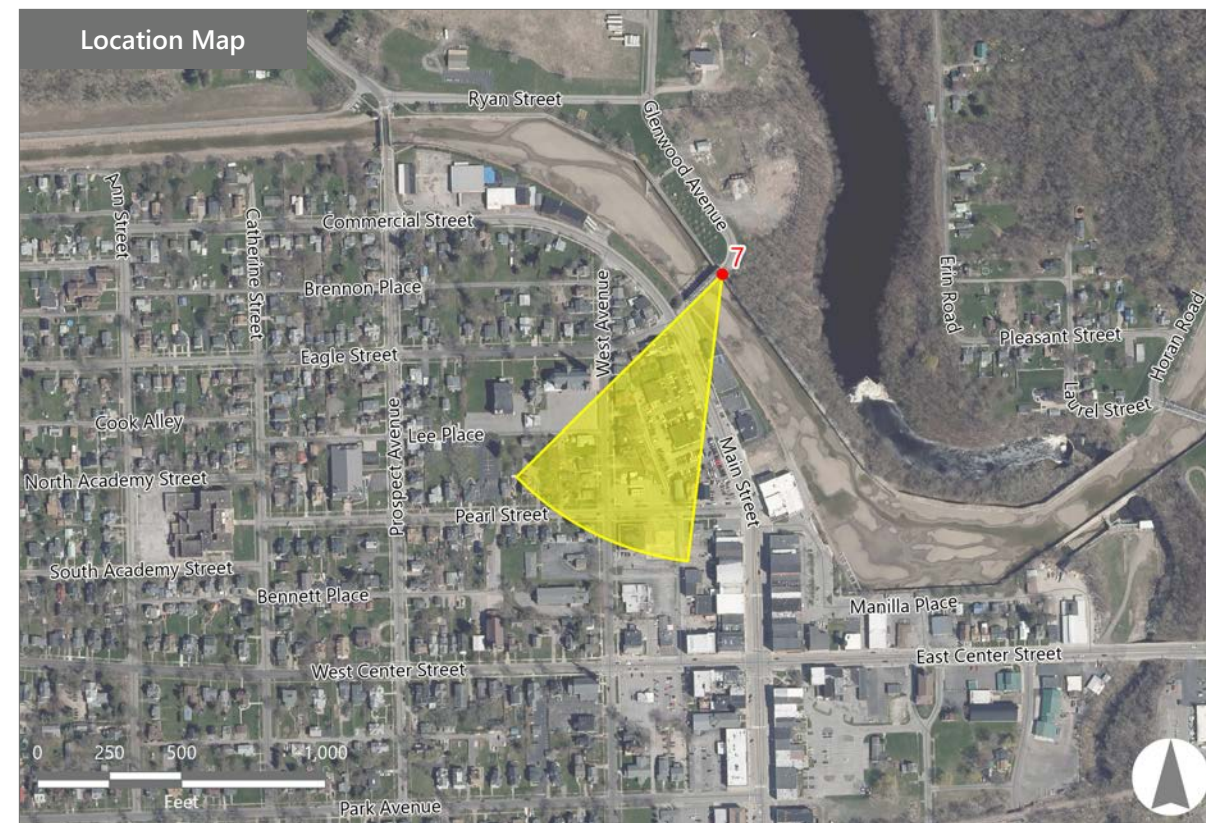
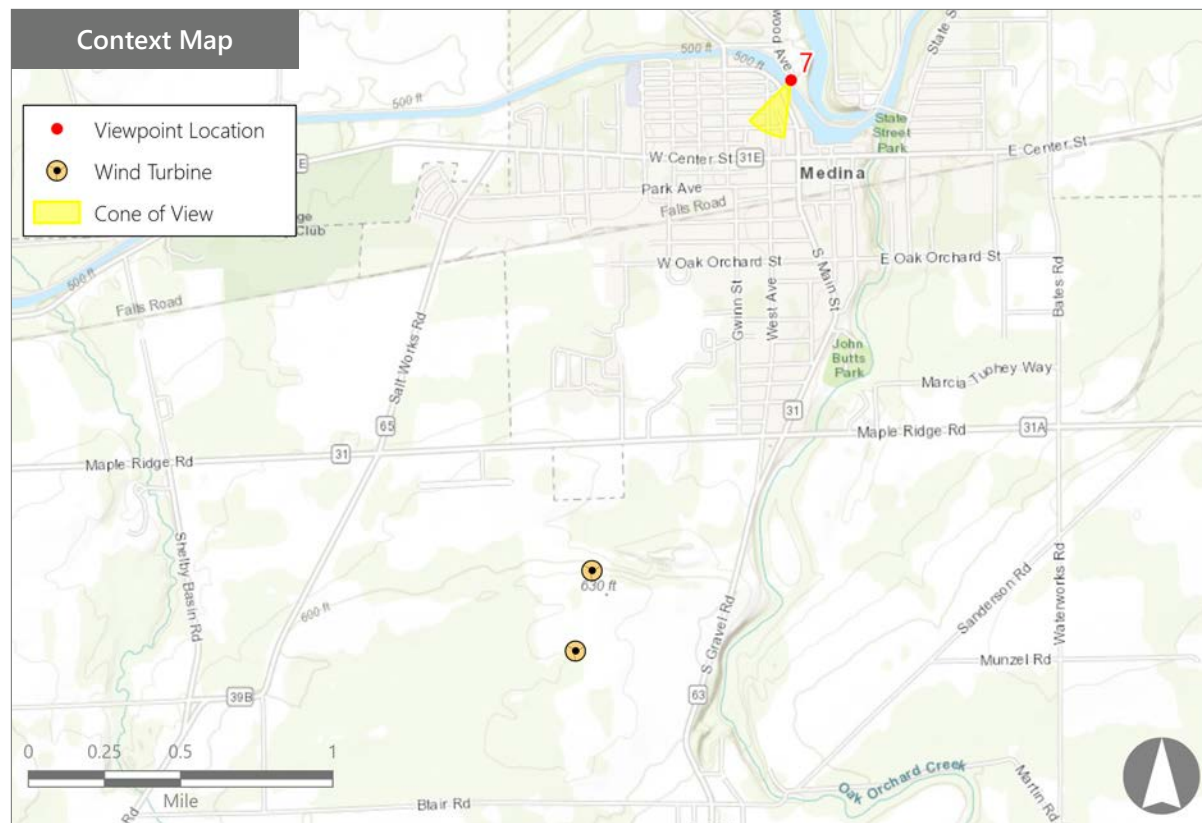
Camera Elevation: 539 feet

Field of View: 39 degrees

Direction of View: Southwest

Printed Size: 10" x 15"

Viewing Distance:** 22"



NOTES

*Distance as measured from the viewpoint to the closest wind turbine generator within the simulated photograph's field of view

**The simulation is at the correct perspective when printed on an 11 inch by 17 inch sheet at full scale, and viewed approximately 22 inches from the eye of the viewer.

South Gravel Road Wind

Town of Shelby, Orleans County, New York

EXISTING



0 1 in 2 in
This scale is designed to insure the simulation images are printed at the intended size.

VIEWPOINT 7
Erie Canal Heritage Trail

South Gravel Road Wind
Town of Shelby, Orleans County, New York



Note: Printed at actual size, the resulting simulation image is 15 inches wide by 10 inches high. At this size and focal length, the simulation should be viewed from a distance 22 inches from the eye of the viewer.

PHOTOSIMULATION



Note: Printed at actual size, the resulting simulation image is 15 inches wide by 10 inches high. At this size and focal length, the simulation should be viewed from a distance 22 inches from the eye of the viewer.



Note: The image above is a panorama photograph taken from Blair Rd. in the Town of Shelby panning clockwise from west (left) to east (right). The green rectangle represents the extent of the simulated photograph.

VIEWPOINT 8
Blair Rd.

VIEWPOINT INFORMATION

Location: Blair Rd.
Town: Shelby
County: Orleans
Latitude: 43.18964° N
Longitude: 78.39951° W
Viewer Distance*: 0.5 mile

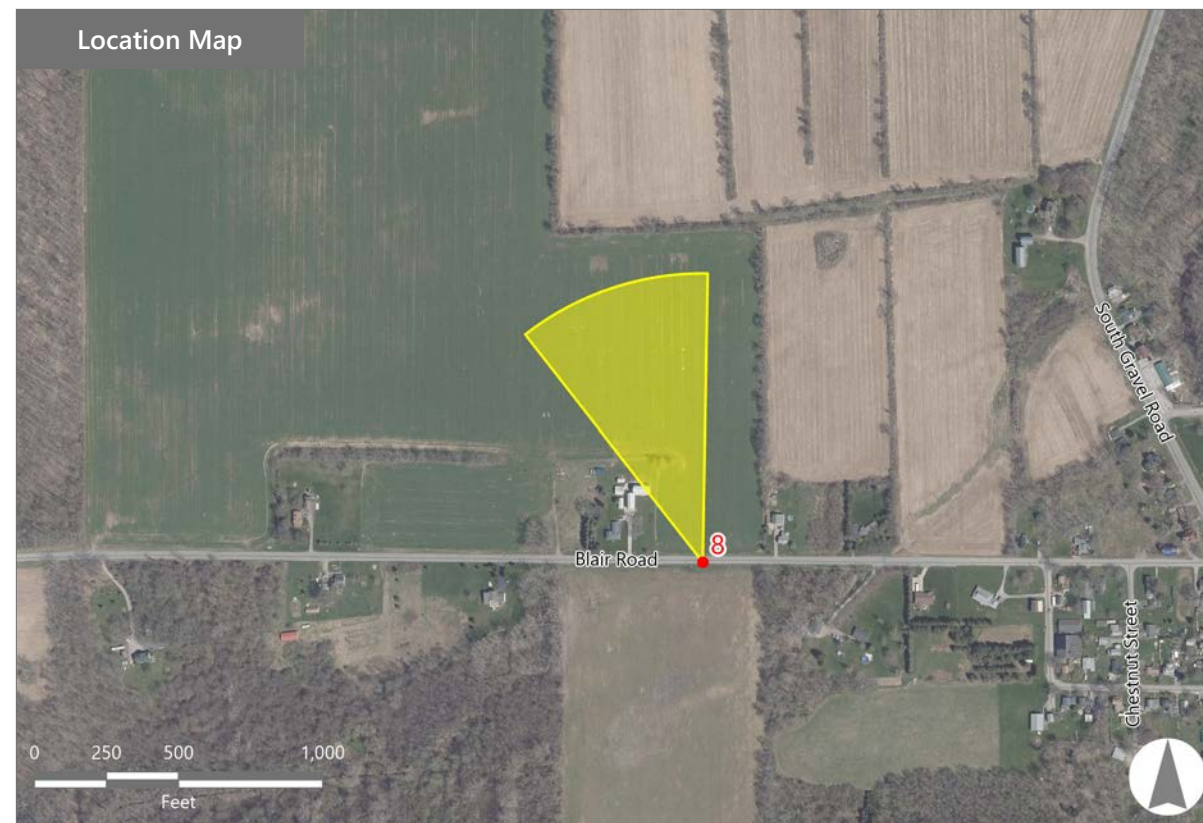
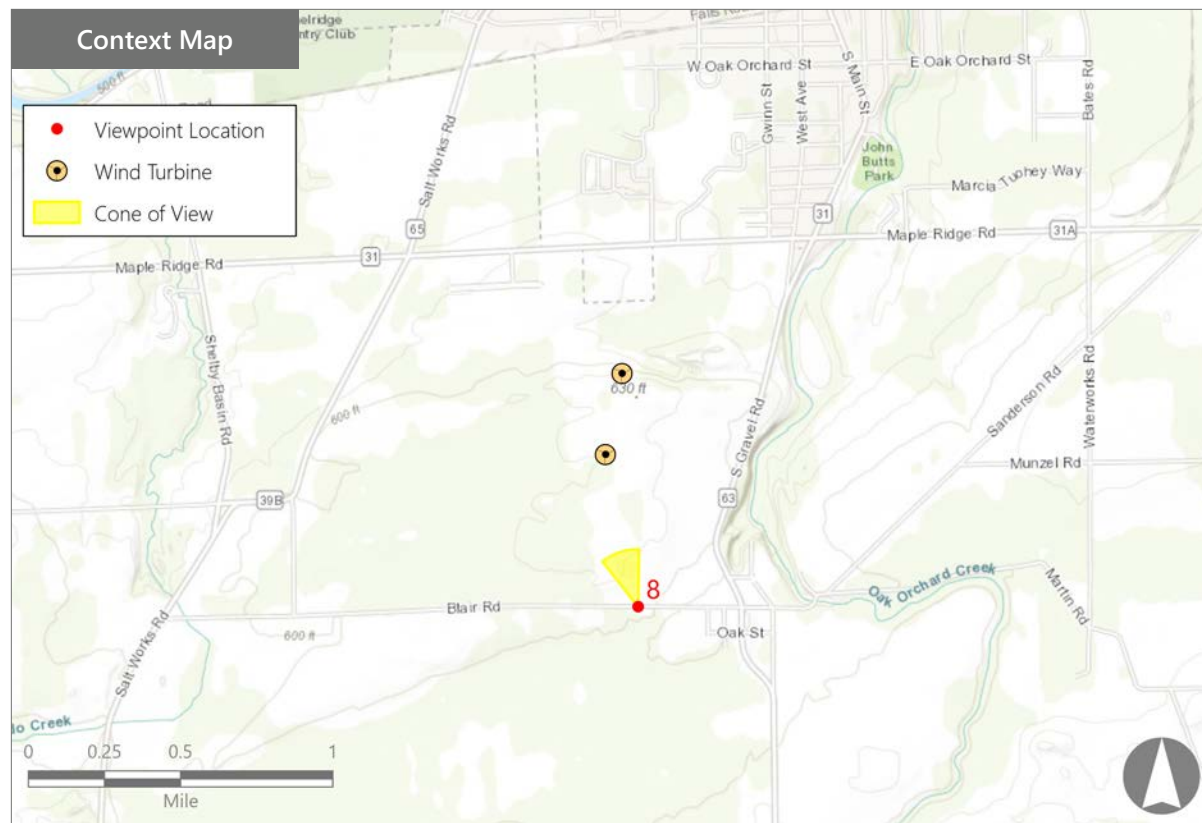
PHOTOGRAPH INFORMATION

Date: May 24, 2022
Time: 10:27 AM
Camera: Nikon D7100
Resolution: 24 Megapixels
Lens Focal Length (35mm equivalent): 51 mm
Camera Elevation: 611 feet
Field of View: 39 degrees
Direction of View: North
Printed Size: 10" x 15"
Viewing Distance:** 22"

NOTES

*Distance as measured from the viewpoint to the closest wind turbine generator within the simulated photograph's field of view

**The simulation is at the correct perspective when printed on an 11 inch by 17 inch sheet at full scale, and viewed approximately 22 inches from the eye of the viewer.



South Gravel Road Wind

Town of Shelby, Orleans County, New York

EXISTING



Note: Printed at actual size, the resulting simulation image is 15 inches wide by 10 inches high. At this size and focal length, the simulation should be viewed from a distance 22 inches from the eye of the viewer.

PHOTOSIMULATION



VIEWPOINT 8
Blair Rd.

South Gravel Road Wind
Town of Shelby, Orleans County, New York



0 1 in 2 in
This scale is designed to insure the simulation images are printed at the intended size.

Note: Printed at actual size, the resulting simulation image is 15 inches wide by 10 inches high. At this size and focal length, the simulation should be viewed from a distance 22 inches from the eye of the viewer.



Note: The image above is a panorama photograph taken from State Route 63 (S. Gravel Rd.) in the Town of Shelby panning clockwise from south (left) to northeast (right). The green rectangle represents the extent of the simulated photograph.

VIEWPOINT 9
State Route 63 (S. Gravel Rd.)

VIEWPOINT INFORMATION

Location: State Route 63 (S. Gravel Rd.)
Town: Shelby
County: Orleans
Latitude: 43.19953° N
Longitude: 78.39136° W
Viewer Distance*: 0.4 mile

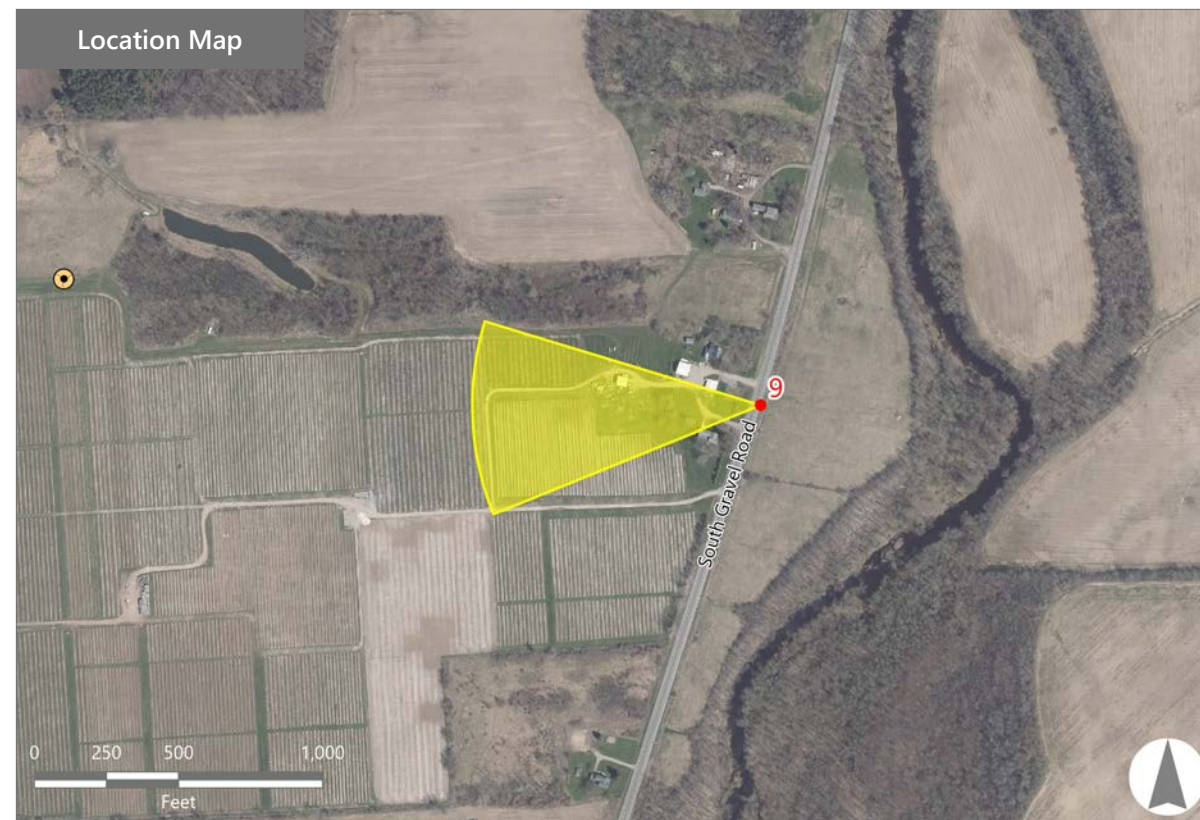
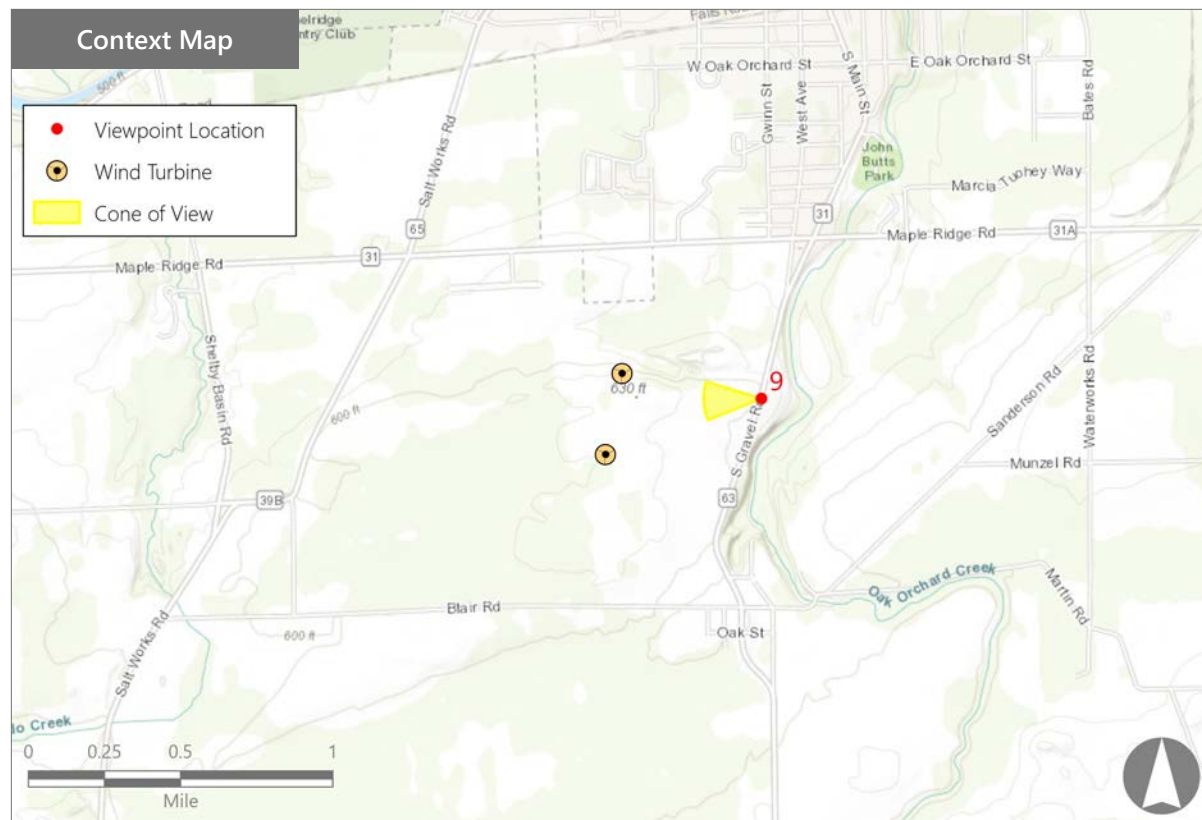
PHOTOGRAPH INFORMATION

Date: May 24, 2022
Time: 10:51 AM
Camera: Nikon D7100
Resolution: 24 Megapixels
Lens Focal Length (35mm equivalent): 51 mm
Camera Elevation: 607 feet
Field of View: 39 degrees
Direction of View: Northwest
Printed Size: 10" x 15"
Viewing Distance:** 22"

NOTES

*Distance as measured from the viewpoint to the closest wind turbine generator within the simulated photograph's field of view

**The simulation is at the correct perspective when printed on an 11 inch by 17 inch sheet at full scale, and viewed approximately 22 inches from the eye of the viewer.



South Gravel Road Wind

Town of Shelby, Orleans County, New York

EXISTING



Note: Printed at actual size, the resulting simulation image is 15 inches wide by 10 inches high. At this size and focal length, the simulation should be viewed from a distance 22 inches from the eye of the viewer.

PHOTOSIMULATION



South Gravel Road Wind
Town of Shelby, Orleans County, New York



VIEWPOINT 9
State Route 63 (S. Gravel Rd.)

0 1 in 2 in
This scale is designed to insure the simulation images are printed at the intended size.

Note: Printed at actual size, the resulting simulation image is 15 inches wide by 10 inches high. At this size and focal length, the simulation should be viewed from a distance 22 inches from the eye of the viewer.



Note: The image above is a panorama photograph taken from Oak Orchard Elementary School in the Village of Medina panning clockwise from east (left) to northwest (right). The green rectangle represents the extent of the simulated photograph.

VIEWPOINT 10
Oak Orchard Elementary School

VIEWPOINT INFORMATION

Location: Oak Orchard Elementary School
Village: Medina
County: Orleans
Latitude: 43.21534° N
Longitude: 78.39310° W
Viewer Distance*: 1.0 mile

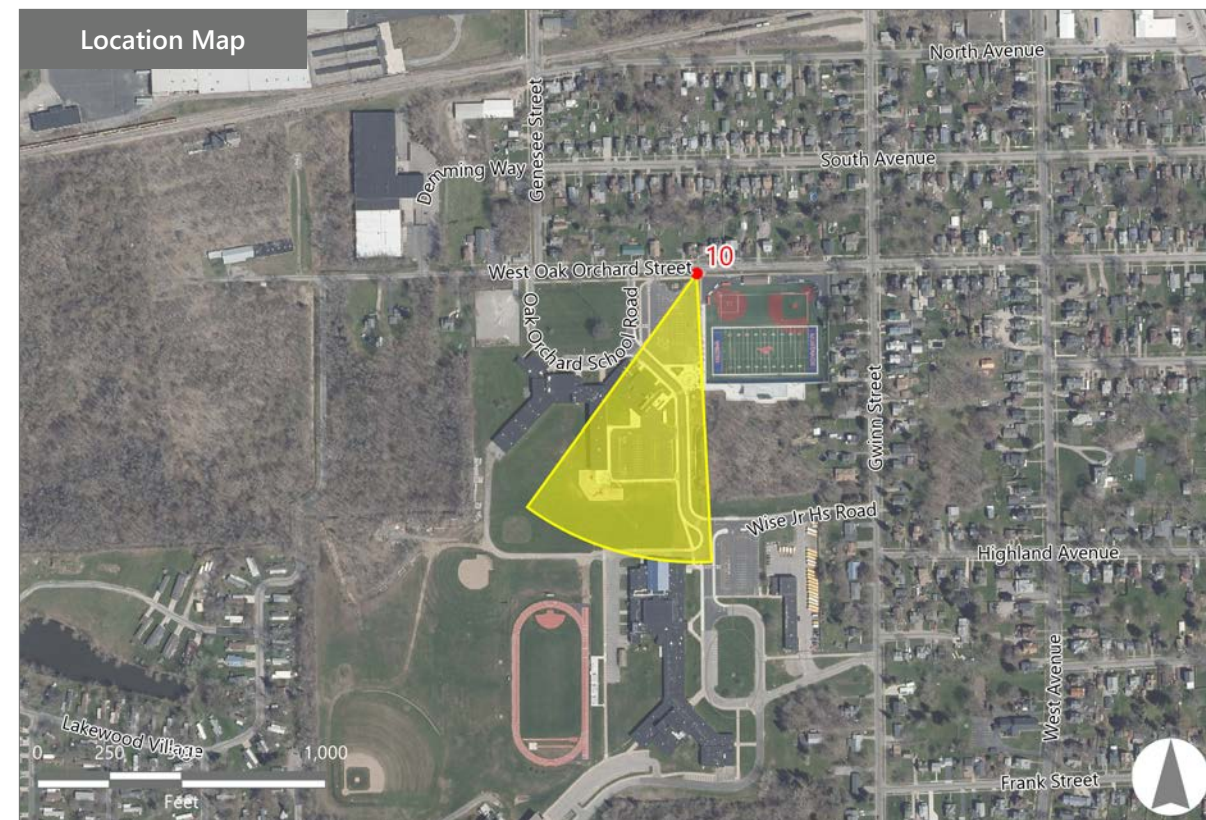
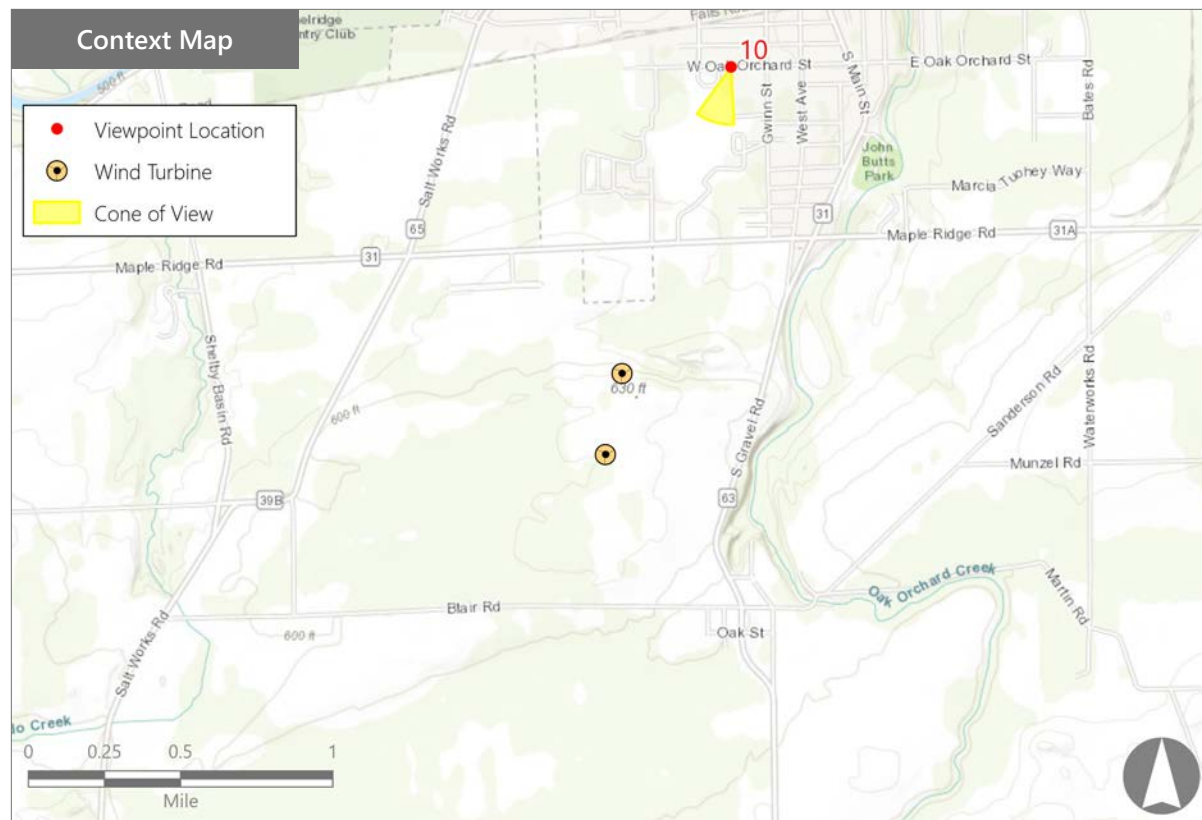
PHOTOGRAPH INFORMATION

Date: May 24, 2022
Time: 12:44 PM
Camera: Nikon D7100
Resolution: 24 Megapixels
Lens Focal Length (35mm equivalent): 51 mm
Camera Elevation: 548 feet
Field of View: 39 degrees
Direction of View: Southwest
Printed Size: 10" x 15"
Viewing Distance:** 22"

NOTES

*Distance as measured from the viewpoint to the closest wind turbine generator within the simulated photograph's field of view

**The simulation is at the correct perspective when printed on an 11 inch by 17 inch sheet at full scale, and viewed approximately 22 inches from the eye of the viewer.



South Gravel Road Wind

Town of Shelby, Orleans County, New York

EXISTING



0 1 in 2 in
This scale is designed to insure the simulation images are printed at the intended size.

VIEWPOINT 10
Oak Orchard Elementary School

South Gravel Road Wind
Town of Shelby, Orleans County, New York
EDR

Note: Printed at actual size, the resulting simulation image is 15 inches wide by 10 inches high. At this size and focal length, the simulation should be viewed from a distance 22 inches from the eye of the viewer.

PHOTOSIMULATION



0 1 in 2 in
This scale is designed to insure the simulation images are printed at the intended size.

VIEWPOINT 10
Oak Orchard Elementary School

South Gravel Road Wind
Town of Shelby, Orleans County, New York
EDR

Note: Printed at actual size, the resulting simulation image is 15 inches wide by 10 inches high. At this size and focal length, the simulation should be viewed from a distance 22 inches from the eye of the viewer.